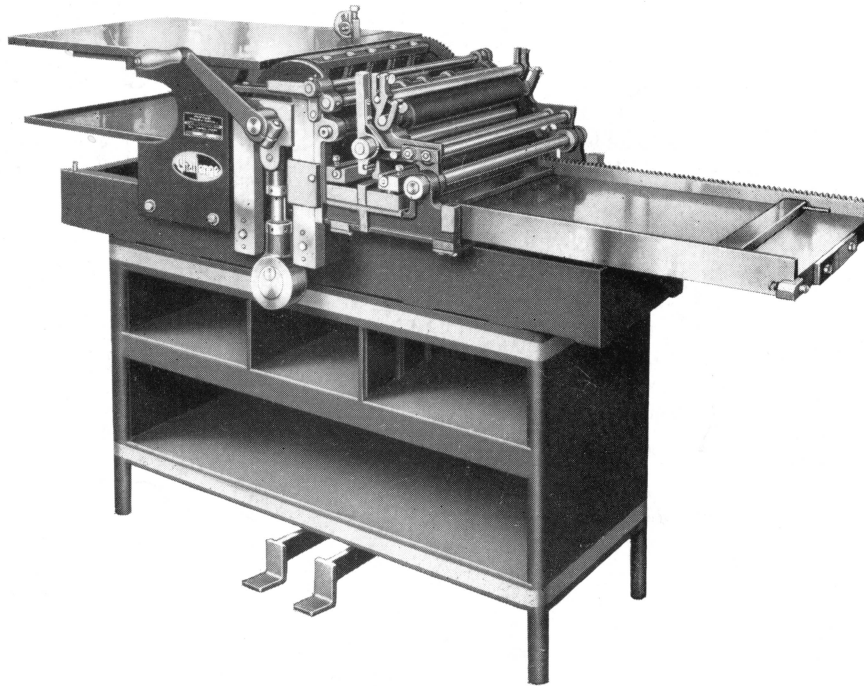


Challenge Proof Press
PARTS MANUAL F-217

SERIES K

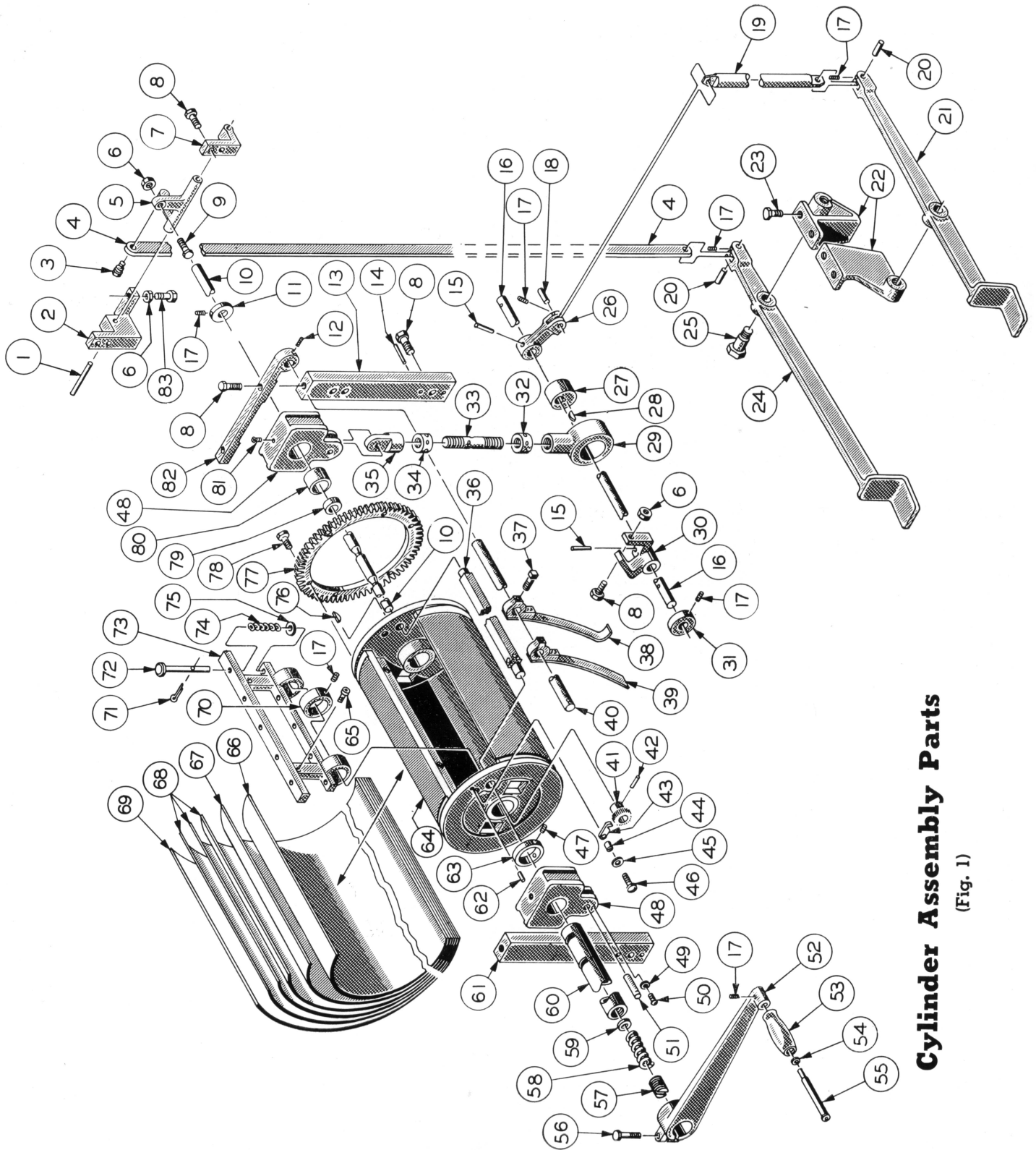
Serial Nos. Under — 3127



**ALWAYS GIVE THE SERIAL NUMBER
OF PRESS WHEN WRITING**

Manufactured by
The Challenge Machinery Company

Grand Haven, Michigan



Cylinder Assembly Parts

(Fig. 1)

Always Give SERIAL NUMBER When Writing **When Ordering Parts Give PART NUMBER**

Ref. No.	PART NUMBER	PART NAME	Quantity		Ref. No.	PART NUMBER	PART NAME	Quantity	
			1528	2028				1528	2028
1	1528K-D687	Bumper Stud	1	1	46	10-24 x $\frac{3}{4}$	Fillister Hd. Machine Screw	1	1
2	1528K-DD1119	Right Hand Trip Lever Mounting Bracket	1	1	47	$\frac{1}{4}$ x $\frac{3}{8}$	Allen Set Screw	12	12
3	1-D783	Gripper Trip Lever Screw ..	1	1	48	1528G-D1010	Cylinder Box	2	2
4	1528K-D718	Treadle Strap	1	1	49	$\frac{3}{16}$	Polished Washer	2	2
5	1528K-D851	Trip Lever	1	1	50	10-24 x $\frac{3}{8}$	Rd. Head Machine Screw ..	2	2
6	$\frac{3}{8}$ "	Jam Nut	4	4	51	S-1037	Notched Pin	2	2
7	1528K-D776	Trip Lever Mounting Block	1	1	52	1528K-D658-1	Crank	1	1
8	$\frac{3}{8}$ -16 x 1	Cap Screw	10	10	53	S-626	Crank Handle	1	1
9	S-1052	Cap Screw	1	1	54	S-627	Washer	1	1
10	1528K-D1097	Gripper Camshaft	1		55	S-629-1	Crank Handle Stud	1	1
	2028K-D1097	Gripper Camshaft		1	56	$\frac{3}{8}$ -16 x 2"	Cap Screw	1	1
11	S-756	Collar	1	1	57	S-992	Threaded Plug	1	1
12	$\frac{1}{4}$ " x $\frac{1}{4}$ "	Allen Set Screw	2	2	58	1528K-D871	Cam Pawl Spring	1	1
13	1528K-D790	Cylinder Box Bracket	2	2	59	$\frac{1}{2}$ "	Polished Washer	1	1
14	6 x $1\frac{3}{4}$ "	Taper Pin	8	8	60	1528K-D657	Cylinder Shaft	1	
15	3 x $1\frac{3}{4}$ "	Taper Pin	2	2		2028K-D657	Cylinder Shaft		1
16	1528K-D708	Impression Trip Shaft	1		61	1528K-D660	Cyl. Box Br'ket, Crank Side	2	2
	2028K-D708	Impression Trip Shaft		1	62	S-328	Pin	1	1
17	$\frac{1}{4}$ -20 x $\frac{3}{8}$ "	Allen Set Screw	7	7	63	S-1049	Collar	4	4
18	S-623	Pin	1	1	64	1528-D656	Cylinder (Standard)*	1	
19	1528K-D716	Treadle Link	1	1		1528-D656-1	Cylinder (Engravers)*	1	
20	S-623	$\frac{3}{8}$ x $1\frac{1}{8}$ Pin	2	2		2028-D656	Cylinder (Standard)*		1
21	1528K-D702	Treadle	1			2028-D656-1	Cylinder (Engravers)*		1
	2028K-D702	Treadle		1	65	$\frac{1}{4}$ x $1\frac{3}{4}$	Allen Cap Screw	2	2
22	1528K-D788-1	Gripper Trip Lever Bracket	2	2		1528K-DD968	Tympan Complete	1	
23	$\frac{3}{8}$ -16 x $1\frac{1}{4}$	Cap Screw	4	4		2028K-DD968	Tympan Complete		1
24	1528K-D782	Gripper Trip Lever	1		66	1528K-D922	Blanket	1	
	2028K-D782	Gripper Trip Lever		1		2028K-D922	Blanket		1
25	S-220	Shoulder Screw	2	2	67	1528K-D923	Press Board	1	
26	1425G-D747	Treadle Lever	1	1		2028K-D923	Press Board		1
27	1425G-D932	Eccentric	2	2	68	1528K-D924	Print Paper	3	
28	$9\frac{3}{4}$ x $\frac{3}{16}$	Woodruff Key	3	3		2028K-D924	Print Paper		3
29	1425G-D695	Imp. Screw Eccentric Nut ..	2	2	69	1528K-D921	Tympan Sheet	1	
30	1528K-D725-1	Impression Stop (Bed)	1	1		2028K-D921	Tympan Sheet		1
31	S-756	Collar	1	1	70	1425G-D1102	Cylinder Shaft Collar	1	1
32	1425G-D705	Impression Lower Lock Nut	2	2	71	$\frac{3}{2}$ x $\frac{3}{4}$	Cotter Pin	5	5
33	1425G-D899	Impression Screw	2	2	72	1425G-DD934	Gripper	5	5
34	1425G-D700	Impression Upper Lock Nut	2	2	73	1528K-D937	Clamp, Tympan	1	
35	1425G-D691	Imp. Screw Swivel Nut	2	2		2028K-D937	Clamp, Tympan		1
36	1528K-D670	Tympan Reel Body	1		74	1425G-D1093	Gripper Spring	5	5
	2028K-D670	Tympan Reel Body		1	75	$\frac{3}{8}$ "	Polished Washer	5	5
37	S-281	Set Screw	5	5	76	#9	Woodruff Key	3	3
38	1528K-DD800	Cylinder Gear Guard	1	1	77	1528K-D659	Cylinder Gear	1	1
39	1528K-DD963	Assembled Paper Band	4	4	78	$\frac{1}{4}$ x 20 x 1	Capscrew	6	6
40	1528K-D714	Paper Band Support	1		79	S-1049	Collar	4	4
	2028K-D714	Paper Band Support		1	80	S-987	Oilite Bearing	2	2
41	1425G-D669	Ratchet	1	1	81	S-836	$\frac{1}{4}$ Bennet Oiler	2	2
42	1 x 1"	Taper Pin	1	1	82	†1528K-D682	Frame Cap	2	2
43	00-D664	Pawl	1	1	83	$\frac{3}{8}$ x $1\frac{1}{4}$	Set Screw	1	1
44	00-D666	Pawl Bushing	1	1					
45	$\frac{3}{16}$	Polished Washer	3	3					

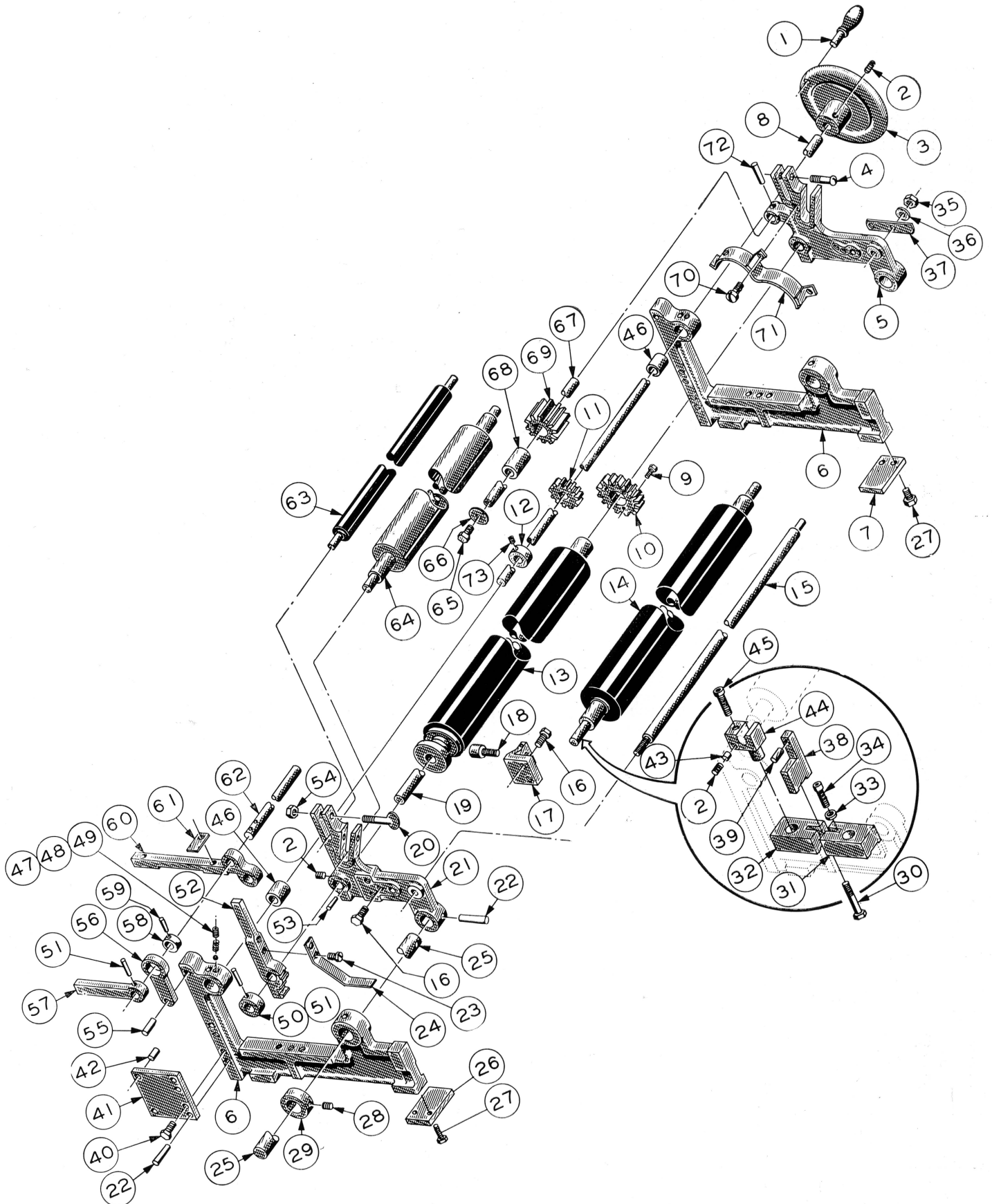
(*)—Cylinder Undercut .025 for Engravers Proof Press.
Cylinder Undercut .065 for Standard Proof Press. (Specify which is desired.)
(†)—Used on K Models only.

Treadle (Ref. No. 21), trips the cylinder or raises it off the bearers to prevent printing on the packing during the return stroke of cylinder.

Treadle (Ref. No. 24), operates the grippers. Grippers may be opened at any point of travel of cylinder.

To change cylinder packing, loosen two thumbscrews underneath the feedboard and back it away from cylinder; release the tympan reel-rod and loosen two Allen screws (Ref. No. 65) and replace packing with new one.

Automatic Inker Assembly Parts



(Fig. 2)

Always Give SERIAL NUMBER When Writing **When Ordering Parts Give PART NUMBER**

Ref. No.	PART NUMBER	PART NAME	Quantity		Ref. No.	PART NUMBER	PART NAME	Quantity	
			1528	2028				1528	2028
1	S-1	Steel Handle	1	1	35	$\frac{3}{8}$	Jam Nut	4	4
2	$\frac{3}{8} \times \frac{3}{8}$	Allen Set Screw	7	7	36	$\frac{1}{4}$	Polished Washer	4	4
3	1528G-D642	Hand Wheel	1	1	37	1528G-D849	Trip Block	2	2
4	$\frac{1}{4}$ -20 x $1\frac{1}{4}$	Rd. Head Machine Screw..	2	2	38	1528G-D770	Inker Frame Plate	2	2
5	1528G-D945	Vibrator Lift, Rear	1	1	39	S-745-D	Pin	2	2
6	1528G-D792	Inker Frame	2	2	40	$\frac{1}{4}$ -20 x $1\frac{3}{4}$	Cap Screw	4	4
7	1528GP-D823	Mounting Bracket, Rear	2	2	41	1528G-D1090	Side Frame Guide	4	4
8	1528G-D734	Gear Shaft	1		42	S-433	Pin	8	8
	2028G-D734	Gear Shaft		1	43	S-450	$\frac{3}{8}$ " Set Screw Button	4	4
9	10-29 x $\frac{5}{8}$	Allen Cap Screw	3	3	44	1528G-D815	Form Roller Socket	4	4
10	1528G-D765	Vibrator Roller Gear	1	1	45	$\frac{1}{4} \times 1\frac{3}{4}$	Allen Cap Screw	4	4
11	1528G-D740	Idler Pinion	1	1	46	2L1478	Oilite Bearing	2	2
12	S-414	Collar	1	1	47	1151	$\frac{1}{8}$ " Steel Ball	2	2
13	1528G-DD916	Assembled Vibrator Roller	1		48	1150	Coil Spring	2	2
	2028G-DD916	Assembled Vibrator Roller		1	49	10-24 x $\frac{3}{16}$ "	Allen Set Screw	2	2
14	1528G-DD785-1	Cast Form Roller	2		50	1528G-D814	Vibrator Spring Collar	2	2
	2028G-DD785-1	Cast Form Roller		2	51	2 x $1\frac{1}{4}$	Taper Pin	3	3
15	1528G-D732	Tie Rod	2		52	1528G-D852	Vibrator Trip Handle	2	2
	2028G-D732	Tie Rod		2	53	S-434	Pin	2	2
16	408-6913	Cap Screw	3	3	54	$\frac{1}{4}$	Jam Nut	1	1
17	1528G-1062	Vibrator Stud Holder	1	1	55	1528G-D841	Cam Stud	2	2
18	S-1012	Cam Follower	1	1	56	1528G-D806	Cam Lever	2	2
19	1528G-D731	Vibrator Shaft	1		57	1528G-D845	Trip Crank, Inker	2	2
	2028G-D731	Vibrator Shaft		1	58	1528G-D818	Cam	2	2
20	$\frac{1}{4}$ -20 x $1\frac{1}{4}$	Thumb Screw	2	2	59	1" x 1"	Taper Pin	2	2
21	1528G-D944	Vibrator Lift, Front	1	1	60	1528G-D682	Frame Cap	2	2
22	3 x $1\frac{3}{4}$	Taper Pin	6	6	61	1528G-D682	Trip Crank Stop	1	1
23	10-24 x $\frac{1}{2}$	Filister Hd. Machine Screw	4	4	62	1528G-D1094	Lift Arm Shaft	1	
24	1528G-D742	Vibrator Spring	2	2		2028G-D1094	Lift Arm Shaft		1
25	1528G-D739-1	Trip Shaft (Inker)	2	2	63	1528G-D733	Drum Rider	1	
26	1528G-D822	Mounting Bracket, Front	2	2		2028G-D733	Drum Rider		1
27	$\frac{1}{4} \times \frac{1}{2}$ "	Cap Screw	8	8	64	1528G-DD745	Drum Core Assembly	1	
28	$\frac{1}{4} \times \frac{1}{4}$ "	Allen Set Screw	2	2		2028G-DD745	Drum Core Assembly		1
29	S-798	Collar	2	2	65	S-671	Cap Screw	1	1
30	$\frac{1}{4}$ -20 x $2\frac{1}{4}$	Cap Screw	2	2	66	S-982	Washer	1	1
31	1528G-D1130	Left Hand Form Roller Socket Holder	2	2	67	1528G-D736	Gear Shaft	1	1
32	1528G-D1129	Right Hand Form Roller Socket Holder	2	2	68	S-1010	Oilite Bearing	1	1
					69	1528G-D836	Idler Gear	1	1
33	$\frac{1}{4}$	Polished Washer	4	4	70	10-24 x $\frac{3}{8}$	Fillister Hd. Machine Screw	2	2
34	$\frac{1}{4} \times 1\frac{3}{4}$	Allen Set Screw	4	4	71	1528G-D1084	Vibrator Gear Guard	1	1
					72	3 x $1\frac{1}{2}$ "	Taper Pin	2	2
					73	$\frac{1}{4} \times \frac{1}{4}$ "	Allen Set Screw	1	1

The automatic inker is shipped attached to the machine. Before press is put into use, rollers should be set as follows.

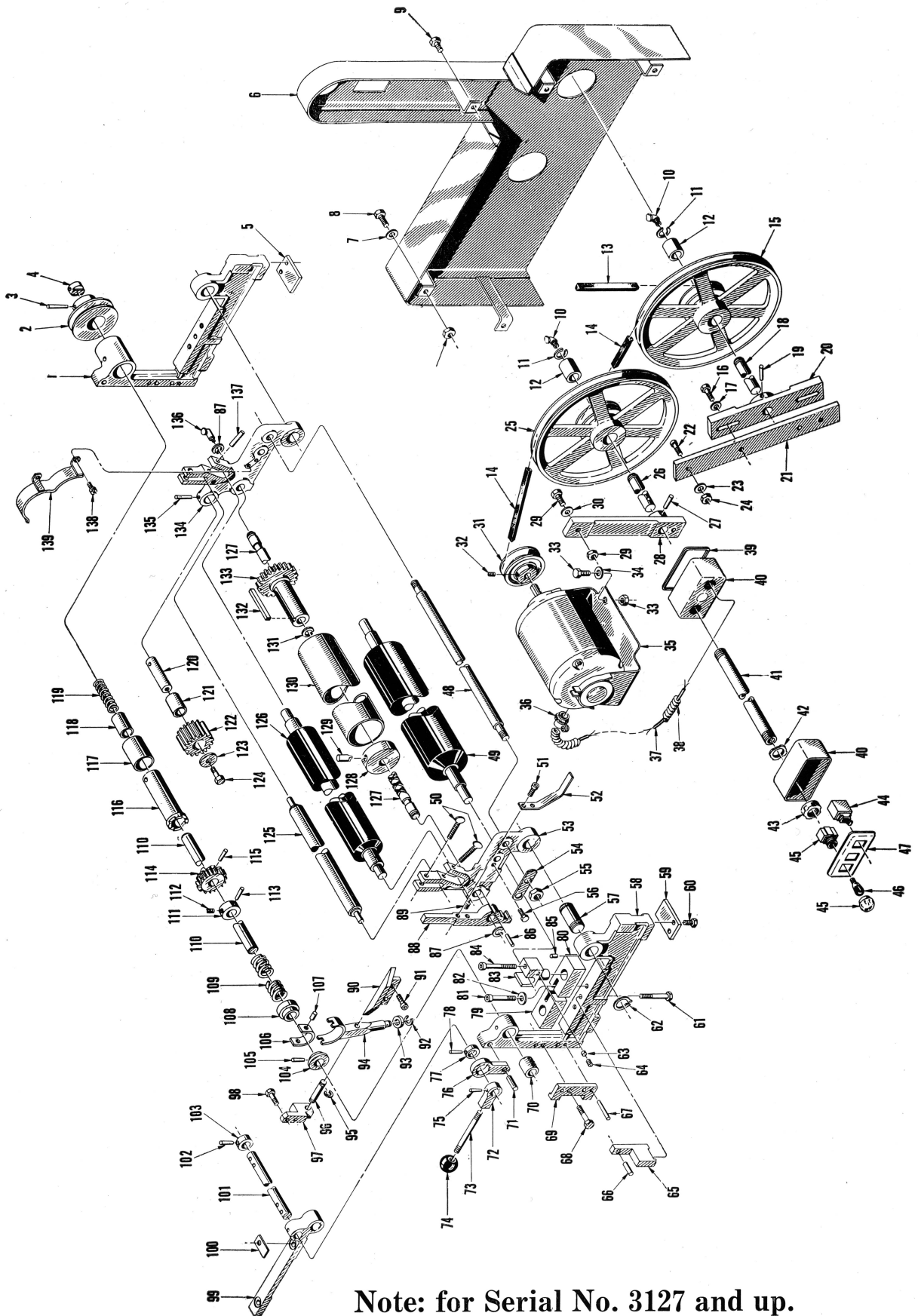
1—Be sure that trip crank, No. 57 is in down position and in contact with stop No. 61.

2—Adjust form rollers to type high gage placed on bed of press. Be sure that the galley plate is on the bed when making this adjustment.

3—Loosen all four form roller socket holders, then lock vibrator roller into position after which both rollers should be adjusted so that they are in even contact with vibrator. Tighten screws holding roller socket holder. When form rollers are properly adjusted, they will show about $\frac{1}{8}$ " contact on face of vibrator.

Excessive pressure between form rollers and vibrator will cause press to run hard.

(Continued on Page 7)



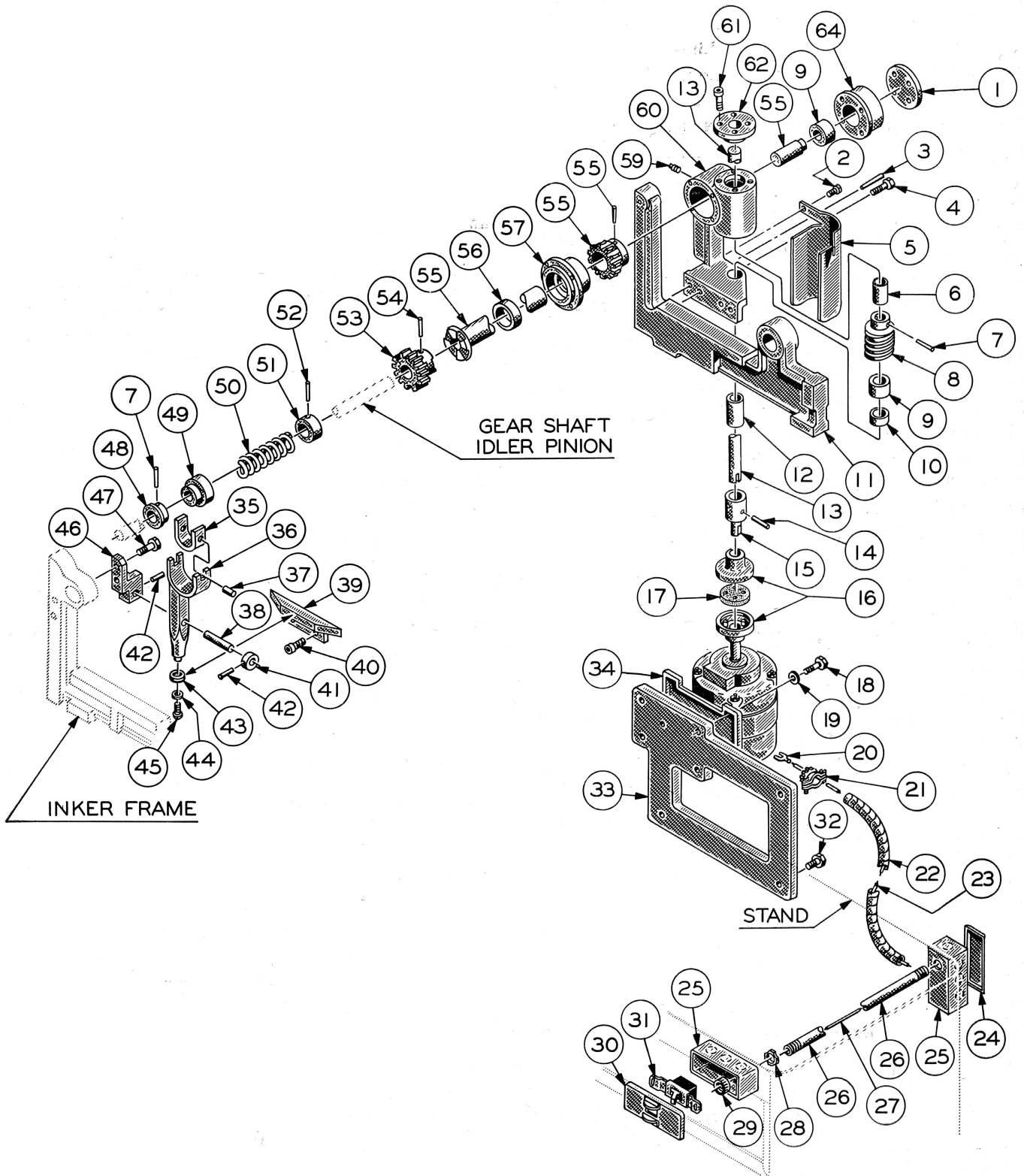
(Fig. 2)

Note: for Serial No. 3127 and up.

Always Give SERIAL NUMBER When Writing **When Ordering Parts Give PART NUMBER**

Ref. No.	Part Number	PART NAME	Quan.	Ref. No.	Part Number	PART NAME	Quan.
1	15GP-D793	Inker Frame	1	68	1/4 x 1 3/4	Capscrew	4
2	15GP-D1198	Upper Sheave	1	69	15G-D1090	Side Frame Guide	4
3	No. 4 x 1 3/4	Taper Pin	1	70	2L-1478	Oilite Bushing	1
4	15GP-D608	Worm Gear Spacer	1	71	1528G-D841	Cam Stud	2
5	1528G-D823	Rear Mounting Bracket	2	72	15G-D845	Inker Trip Crank	1
6	15GP-DD499	Belt Guard	1	73	15G-D825	Lift Arm	1
7	1/4	Washer	4	74	15G-D850	Trip Lever Handle	1
8	1/4 x 3/4	Machine Bolt & Nut	4	75	No. 2 x 1 1/4	Taper Pin	1
9	1/4 x 1/2	Capscrew	1	76	1528G-D806	Cam Lever	2
10	S-827	Oil Cup	2	77	1528G-D818	Cam	2
11	S-1193	Snap Ring	2	78	No. 1 x 1	Taper Pin	2
12	S-1257	Oilite Bushing	4	79	1528G-D1129	Form Roller Socket R.H.	2
13	15GP-D1212	Inker V-Belt	1	80	1528G-D1130	Form Roller Socket Holder L.H.	2
14	15GP-D1213	Inker Drive V-Belt	2	81	1/4 x 1 1/4	Allen Capscrew	4
15	15GP-DD1206	Tightener Sheave	1	82	1/4	Polished Washer	4
16	3/8 x 3/4	Capscrew	2	83	1528G-D815	Form Roller Socket	4
17	3/8	Polished Washer	2	84	1/4 x 1 3/4	Allen Capscrew	4
18	15GP-1207	Sheave Tightener Stud	1	85	S-328	Pin	2
19	No. 3 x 1 3/4	Taper Pin	1	86	S-434	Pin	2
20	15P-D1208	Sheave Tightener Bracket	1	87	S-1193-62	Snap Ring	2
21	15GP-D1210	Sheave Slide	1	88	1528G-D852	Vibrator Trip Handle	2
22	1/4 x 3/4	Allen Capscrew	2	89	3/8 x 3/8	Allen Setscrew	2
23	1/4	Washer	2	90	1528GP-D599	Power Inker Cam	1
24	1/4	Hex Nut	2	91	1/4 x 3/4	Allen Capscrew	2
25	15GP-DD1202	Center Sheave	1	92	S-1193-31	Snap Ring	1
26	15GP-D1203	Center Sheave Stud	1	93	1528GP-D600	Power Inker Cam Roller	1
27	No. 3 x 1 3/4	Taper Pin	1	94	1528GP-DD601	Power Inker Cam Lever	1
28	15GP-D1204	Center Sheave Bracket	1	95	S-1193-37	Snap Ring	1
29	408-5242	Machine Bolt and Nut	2	96	15GP-D614	Power Inker Cam Lever Shaft	1
30	1/4	Washer	2	97	15GP-D613	Power Inker Cam Lever Bracket	1
31	15GP-D1211	Motor Sheave	1	98	1/4 x 3/4	Capscrew	2
32	5/8 x 3/8	Allen Cup Point Set Screw	1	99	1528G-D682	Frame Cap	2
33	1/4 x 3/4	Machine Bolt and Nut	4	100	1528G-D623	Trip Crank Stop	1
34	1/4	Washer	4	101	1528G-D1094	Lift Arm Shaft	1
35	KK-67-7	Motor	1	102	No. 2 x 1 1/4	Taper Pin	1
36	K-87-1	Squeeze type wire connector	3	103	2L-1340	Collar	1
37	E-505-15	Wire-Motor to Junction Box	1	104	1528GP-D1122	Power Inker Clutch Flange	1
	E-505-39	Wire-Motor to Switch	1	105	No. 3 x 1	Taper Pin	1
	E-505-27	Wire No. 14 Rubber Covered	2	106	1528GP-D627	Power Inker Clutch Ring	1
	E-505-32	Wire-Switch to Switchbox	2	107	S-1020-D	Pin	2
38	E-649-10	Flexible Conduit - 1/2 x 10 in. long	1	108	1528GP-D602	Power Inker Clutch Spool	1
39	S-1040	Handy Box Cover	1	109	1528GP-D1124	Power Inker Clutch Spring	1
40	S-997	Flush Device Box	2	110	15GP-D734	Gear Shaft	1
41	E-632	Conduit	1	111	S-414	Collar	1
42	E-519	Conduit Lock Nut	2	112	1/4 x 1/4	Slotted Set Screw	1
43	E-511	Conduit Bushing	2	113	No. 3 x 1 1/4	Taper Pin	1
44	S-730-0	Tumbler Light Switch	1	114	1528G-D740	Idler Pinion	1
45	S-731	Bakelite Pilot Light	1	115	No. 3 x 1 1/2	Taper Pin	1
46	S-732	Pilot Light Bulb (120 V)	1	116	15GP-D610	Power Inker Clutch	1
	S-732-1	Pilot Light Bulb (220 V)	1	117	S-1250	Oilite Bushing	1
47	S-1040-1	Handy Box Cover	1	118	S-1251	Oilite Bushing	2
48	1528G-D732	Tie Rod	2	119	1528GP-D632	Gear Shaft Spring	1
49	1528G-DD785-1	Cast Form Roller	2	120	1528G-D736	Gear Shaft	1
50	1/4 x 1 1/4	Thumbscrew	2	121	S-1010	Oilite Bushing	1
51	No. 10 x 1/2	Machine Screw	2	122	1528G-D836	Idler Gear	1
52	1528G-D742	Vibrator Spring	2	123	S-982	Washer	1
53	1528G-D944	Vibrator Lift-Front	1	124	1/4 x 3/8	Plated Capscrew	1
54	1528G-D849	Trip Block	2	125	1528G-D733	Drum Rider	1
55	3/8	Jam Nut	4	126	1528G-DD745	Drum Core Assembly	1
56	1/4 x 1	Capscrew	2	127	15G-D731	Vibrator Shaft	1
57	S-1228	Straight Rod End Pin	2	128	15G-D454	Vibrator Roller Hub L.H.	1
58	1528G-D792	Inker Frame	1	129	15G-D812	Vibrator Nut	1
59	1528G-D822	Front Mounting Bracket	2	130	15G-D741	Vibrator Shell	1
60	1/4 x 1/2	Capscrew	8	131	S-1193-62	Snap Ring	1
61	1/4 x 2 1/4	Capscrew	2	132	S-1222	Square Key	1
62	S-1073-100	Snap Ring	4	133	15G-D765	Vibrator Roller Gear	1
63	3/8	Setscrew Button	4	134	1528G-D945	Vibrator Lift-Rear	1
64	3/8 x 3/8	Allen Setscrew	4	135	No. 3 x 1 1/2	Taper Pin	1
65	1528G-D770	Inker Frame Plate	2	136	S-1227	Oil Cup	1
66	S-745-D	Pin	2	137	21S-250-1000	Pin	2
67	No. 3 x 1 3/4	Taper Pin	4	138	No. 10 x 3/8	Machine Screw	2
				139	1528G-D1084	Vibrator Gear Guard	1

Power Inker Assembly Parts



(Fig. 3)

Always Give SERIAL NUMBER When Writing **When Ordering Parts Give PART NUMBER**

Ref. No.	PART NUMBER	PART NAME	Quantity		Ref. No.	PART NUMBER	PART NAME	Quantity	
			1528	2028				1528	2028
1	1528K-D1066	Gear Box Cover	1	1	35	1528GP-D627	Power Inker Clutch Ring	1	1
2	10-24 x ¼	Fillister Hd. Machine Screw	2	2	36	1528GP-DD601	Power Inker Cam Lever	1	1
3	6	Taper Pin	2	2	37	S-1020-D	Pin	2	2
4	¼ x ¾"	Allen Cap Screw	2	2	38	1528GP-D614	Pow. Inker Cam Lev'r Shaft	1	1
5	1528GP-D1064	Worm Shaft Guard	1	1	39	1528GP-D599	Power Inker Cam	1	1
6	S-1018	Oilite Bearing	1	1	40	¼ x ¾	Allen Cap Screw	2	2
7	3 x 1	Taper Pin	2	2	41	S-1019	Collar	1	1
8	1528GP-D1070	Worm	1	1	42	0 x ¾	Taper Pin	2	2
9	S-716	Bearing	2	2	43	1528GP-D600	Power Inker Cam Roller	1	1
10	S-728	⅜" Shaft Oil Seal	1	1	44	8	Washer	1	1
11	*1528GP-D793	Inker Frame—Gear Side ..	1	1	45	8-32 x ¼	Rd. Head Machine Screw ..	1	1
12	S-1017	Oilite Bearing	1	1	46	1528GP-D613	Pow. Inker Cam Lev. Br'ket	1	1
13	1528GP-D604	Power Inker Worm Shaft	1	1	47	¼ x ¾"	Cap Screw	2	2
14	K-121-1	Pin	2	2	48	1528GP-D1122	Power Inker Clutch Flange	1	1
15	1528GP-D609	Worm Shaft Coupling	1	1	49	1528GP-D602	Power Inker Clutch Spool ..	1	1
16	S-796	½ Flexible Coupling	1	1	50	1528GP-D1124	Power Inker Clutch Spring	1	1
17	K-15-1	Clutch Leather	1	1	51	S-414	Collar	1	1
18	⅝ x ¾	Cap Screw	4	4	52	3 x 1¼	Taper Pin	1	1
19	⅝	Polished Washer	4	4	53	1528GP-D740	Idler Pinion	1	1
20	K-297	Spade Clip Terminal	5	5	54	3 x 1½	Taper Pin	1	1
21	K-87-1	Squeeze Type Wire Conn.	2	2	55	†1528GP-DD624	Power Inker Clutch Assem.	1	1
22	E-634	Conduit-Motor to Junct. Box	1	1	56	S-1034	Cylinder Bearing Collar	1	1
23	EE-635	Wire-Motor to Junction Box	2	2	57	1528GP-D607	Worm Gear Box Cover	1	1
24	S-1040	Blank Box Cover	1	1	58	Reserved			
25	S-997	Flush Device Box	2	2	59	S-1036	⅜ Pipe Breather Plug	1	1
26	E-632	Conduit-Switch to Junc. Box	1	1	60	1528GP-D1063	Worm Gear Box	1	1
27	E-633	Wire-Switch to Junction Box	2	2	61	10-24 x ½	Allen Cap Screw	16	16
28	E-519	½ Conduit Lock Nut	1	1	62	1528GP-D606	Worm Gear Box Cap	1	1
29	E-511	½ Conduit Bushing	2	2	63	Reserved			
30	SS-998	Flush Device Box Cover	1	1	64	1528GP-D605	Worm Gear Box Face	1	1
31	S-996	Tumbler Switch Single Pole	1	1					
32	¼ x ¾"	Allen Cap Screw	4	4					
33	1528GP-D612	Power Inker Motor Bracket	1	1					
34	KK-67-1	¼ H. P. Motor	1	1					

(†)—This part sold as an assembly only.
 (*)—This part used on gear side only. Use Part No. 1528G-D792 for crank side replacement.

The worm gear box, No. 60, is packed with Solidified Oil No. 1808, a product of Standard Oil Company, and requires no further lubrication.

Continued from Page 5, (Fig. 2)

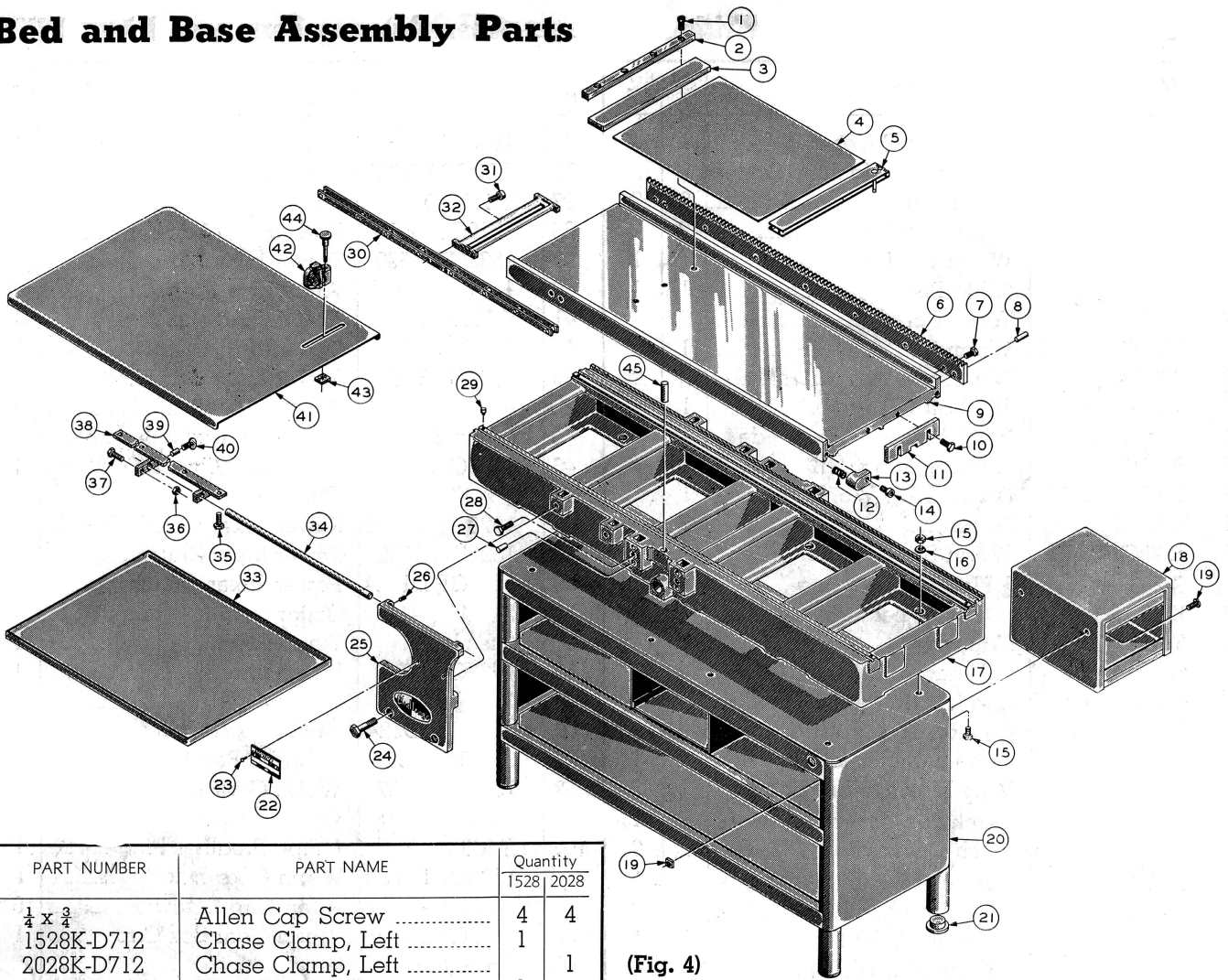
Before press is put into use, rollers should be set as follows:

- 1—Be sure that trip lever, No. 57 is in down position and in contact with stop No. 61.
- 2—Adjust form rollers to type high gage placed on bed of press. Be sure that the galley plate is on the bed when making this adjustment.
- 3—Loosen all four form roller socket holders, then lock vibrator roller into position after which both rollers should be adjusted so that they are in even contact with vibrator. Tighten screws holding roller socket holder. When form rollers are properly adjusted, they will show about 1/8" contact on face of vibrator.

When press is not being used, the top rollers of the inker can be raised to clear the form rollers by releasing lever 52 at each side of inker and tilting the top section back against the stop. Form rollers can also be raised to clear the form by raising lever 57 on the operators side of the press.

To adjust the cylinder impression, loosen collars No. 32 and 34 at each end of the cylinder just below the cylinder boxes and turn the shaft using the special pin wrenches provided. After the cylinder is adjusted properly, be sure to tighten the collars on the shafts.

Bed and Base Assembly Parts



(Fig. 4)

Ref. No.	PART NUMBER	PART NAME	Quantity	
			1528	2028
1	$\frac{1}{4} \times \frac{3}{4}$	Allen Cap Screw	4	4
2	1528K-D712	Chase Clamp, Left	1	
	2028K-D712	Chase Clamp, Left		1
3	1528K-D650	Head Register Bar	1	
	2028K-D650	Head Register Bar		1
4	1528K-D964	Galley Plate	1	
	2028K-D964	Galley Plate		1
5	1528K-DD1143	Assembled Form Lock	1	
	2028K-DD1143	Assembled Form Lock		1
6	1528K-D662	Rack	1	1
7	$\frac{3}{8} \times 1\frac{1}{4}$ "	Cap Screw	7	7
8	$6 \times 1\frac{1}{2}$	Taper Pin	2	2
9	1528K-D654	Bed	1	
	1528K-D654-1	Bed, .918 Bearer Height Engravers Proof Press		1
	2028K-D654	Bed	1	
	2028K-D654-1	Bed, .918 Bearer Height Engravers Proof Press		1
10	$\frac{3}{8} \times 1$ "	Cap Screw	2	2
11	1528K-D713	Chase Clamp, Right	1	
	2028K-D713	Chase Clamp, Right		1
12	1528K-D689	Stop Spring	1	1
13	1528K-DD685	Bumper	1	1
14	$\frac{3}{8} \times 1$ "	Allen Cap Screw	2	2
15	$\frac{3}{8} \times 1\frac{1}{2}$	Machine Bolt and Nut	8	8
16	$\frac{3}{8}$ HVY DTY	Lock Washer	8	8
17	1528K-D701-2	Base	1	
	2028K-D701-2	Base		1
18	*1534H-DD1037	Ink Plate and Rag Box	1	1
19	* $\frac{1}{4} \times 1\frac{1}{4}$	Rd. Head Stove Bolt & Nut..	2	2
20	1528K-DD988	Stand	1	
	2028K-DD988	Stand		1
21	K-309-4	Stand Foot	4	4
22	14C-D698	Name Plate	1	1

Ref. No.	PART NUMBER	PART NAME	Quantity	
			1528	2028
23	$12 \times \frac{1}{2}$	Escutcheon Pin	2	2
24	$\frac{3}{8} \times 1\frac{1}{4}$ "	Cap Screw	4	4
25	1528K-D794	Feed Board Bracket	1	1
	15228K-D795	Feed Board Bracket		1
26	$\frac{1}{4} \times \frac{1}{2}$ "	Set Screw	4	4
27	$6 \times \frac{3}{4}$	Taper Pin	8	8
28	$\frac{3}{8} \times 1\frac{3}{4}$ "	Cap Screw	4	4
29	18-D10006	Bed Roller Stop	4	4
30	28K-D1012	Bed Roller	2	3
31	10-24 x $\frac{1}{2}$	Allen Cap Screw	4	8
32	15K-D1098	Side Fr. Spacer (Bed Roller)	1	
	20K-D1098	Side Fr. Spacer (Bed Roller)		2
33	1528K-DD723	Delivery Board	1	
	2028K-DD723	Delivery Board		1
34	1528-D1095	Feed Bd. Mount. Br'ket Rod	2	2
35	10-24 x $\frac{3}{4}$	Fillister Hd. Machine Screw	8	8
36	$\frac{1}{4}$	Hex Nut	2	2
37	$\frac{1}{4} \times 1\frac{1}{2}$ "	Set Screw	2	2
38	1528K-DD721	Feed Board Spacer, Front ..	1	1
	1528K-DD722	Feed Board Spacer, Rear ..	1	1
39	S-328	Pin	2	2
40	$\frac{1}{4} \times \frac{3}{4}$ "	Thumbscrew	2	2
41	1528K-DD724	Feed Board	1	
	2028K-DD724	Feed Board		1
42	1528K-DD592	Side Guide Assembly	1	1
43	1528K-D598	Side Guide Holder Nut	1	1
44	1528K-DD594	Side Guide Holder Screw ..	1	1
45	15K-D687	Bumper Stud	1	1

(*)—These parts used on Model "K" only.